

ALVARADO

GATEKEEPER

Optical Turnstile Control & Monitor Software



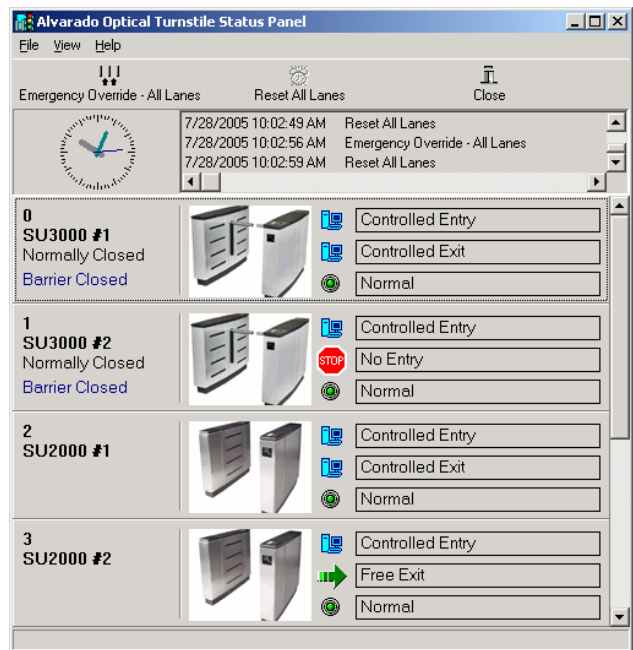
833 Shannon Drive
Crown Point, IN 46307
Phone: 219-661-8964 Fax: 219-661-8965
sales@securmar.com

GateKeeper is a real-time control and monitoring software system designed for use with Alvarado's Supervisor 2000 and Supervisor 3000 Optical Access Control Turnstiles.

GateKeeper functions as a virtual control panel, allowing the user to configure, control and monitor all aspects and settings of multiple SU2000 and SU3000 turnstile lanes without the use of hardware switches and alarm panels.

The communication is established via a daisy-chained full duplex, 4-wire RS485 serial cable, and can accommodate up to 16 turnstiles per COM port.

The stand alone software is easy to install and configure.



SYSTEM FEATURES

Monitoring and control of turnstiles

All functions and features of the SU2000 and SU3000 turnstiles can be controlled and monitored in real time using GateKeeper. These features include:

- *Communication Status* – GateKeeper maintains a real-time status of all the turnstiles installed in the entire facility.
- *Barrier Arm Position Status and Control (SU3000)* – The condition of each arm is tracked and any change is updated in real-time on the screen.
- *Barrier Arm Operation Mode Status (SU3000)* – Arm positions of each turnstile can be altered to normally open position, normally closed position, or disabled instantly via the configuration menu.



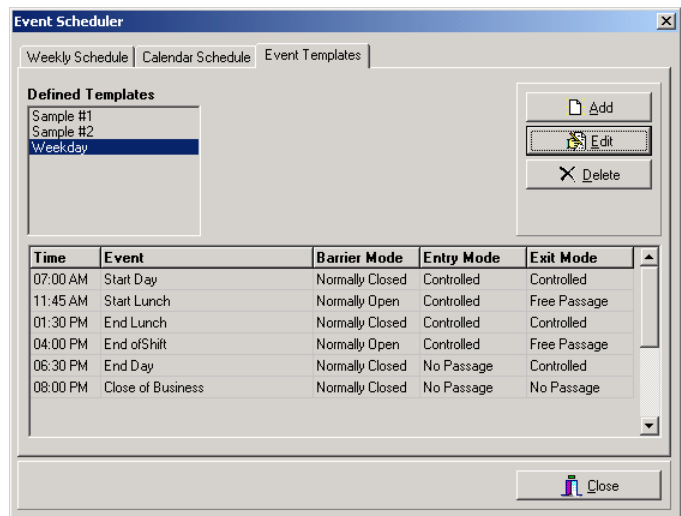
- *Passage Mode Status* – The passage mode for each direction of operation can be configured independently, to provide any entry/exit combination of controlled passage, free passage or no passage.
- *Alarm Status and Reset All Turnstile Alarms* – In the event of an alarm condition on the turnstile, GateKeeper alerts the administrator by reporting the turnstile alarm condition onscreen. An alarm can be caused by any of the following:
 - Unauthorized entry
 - Tailgating
 - Delayed entry
 - Crawl violation
 - Loitering
 - Gate crashing
 - Emergency breakaway (SU3000)

Alarms may be configured to require a manual reset using the GateKeeper interface, or the software provides for an automatic reset mode in which case the alarm times out after a specified interval.

- *Place Turnstiles into an Emergency Override Condition* – In the event of a fire or other emergency conditions, GateKeeper can be used to disable turnstiles to allow for free flow of personnel.
- *Allow a single passage in any direction* – A single passage on any turnstile can be provided from GateKeeper in either the entry or exit direction.
- *Advanced settings* – In addition to the settings mentioned above, the following advanced settings can be configured via the software for each turnstile.
 - Tailgate Sensitivity
 - Blocked Sensor Time Limit
 - Alarm Mode
 - Alarm Duration
 - Aborted Passage Timer
 - Crawl Detection Enable
 - Physical Orientation

Event Scheduler

- GateKeeper integrates an event scheduling feature that enables turnstile settings such as Barrier Mode (SU3000), Entry Mode, and Exit Mode to be changed automatically at scheduled times.
- Specific events can be created for individual turnstiles or for all turnstiles.
- Events can be activated at a specific time on a daily or weekly basis, or can be assigned to specific dates on a calendar.
- The software comes with a list of predefined templates. New event templates can also be easily created.



Log Report

- GateKeeper maintains a detailed record log of all activity for 7 days. The log tracks the alarms generated from each turnstile and the activities performed by the GateKeeper Administrators, Operators and Supervisors.
- GateKeeper provides the option to save or print the Log Report.

Security

- The system provides three different levels of access: Administrator, Supervisor, and Operator. An Administrator can access any function within the system. An Operator has the lowest level access to system functions.
- Access to GateKeeper is granted through passwords that can be created by the Administrator.

MINIMUM SYSTEM REQUIREMENTS

500MHz Pentium III Host PC

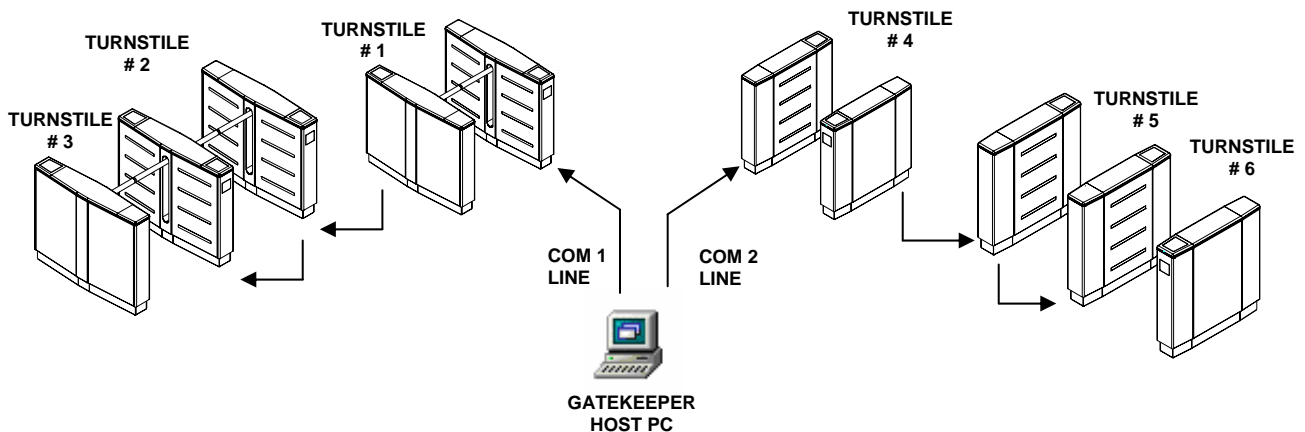
256MB Ram

Windows 2000/XP

RS232 Serial Port (Alvarado provides an approved RS-232 to RS-485 converter)

CDROM Drive (for software installation)

SAMPLE CONNECTION DIAGRAM



ALVARADO

Alvarado Manufacturing Company, Inc.
12660 Colony Street
Chino, CA 91710

Telephone (909) 591-8431
Toll Free (800) 423-4143
Fax (909) 628-1403

www.alvaradomfg.com



833 Shannon Drive
Crown Point, IN 46307
Phone: 219-661-8964 Fax: 219-661-8965
sales@securmar.com